

## SMOKE ALARMS - GENERAL INFORMATION

A short guide to smoke alarms and planning for escape in an emergency.

# CLIPSAL®

by Schneider Electric

**HARD WIRED SMOKE ALARMS MUST BE INSTALLED BY A LICENCED ELECTRICIAN.**

### Information on Smoke Alarms

#### What Smoke Alarms can do

Smoke alarms can only HELP protect your family and home against loss from a fire. For maximum protection, smoke alarms should be installed in every bedroom and every other area of the home to allow everyone in the home to be able to hear and respond to the alarm sound.

**SMOKE ALARMS MAY GIVE YOU A WARNING OF FIRE AND SMOKE BUT ONLY IF THEY ARE INSTALLED, USED AND MAINTAINED IN ACCORDANCE WITH THE INSTALLATION INSTRUCTIONS.**

#### What Smoke Alarms will not do

**A smoke alarm will not work without power:** Hard wired smoke alarms need mains power (220-240 V a.c.) and a good backup battery that is installed correctly to operate. Lithium battery powered smoke alarms must be installed correctly to the mounting base to turn on.

**A smoke alarm will not sense a fire when smoke cannot reach the unit:** If a fire starts in a chimney, wall, roof, the other side of a closed door or any other isolated area, the smoke alarm may not sense the smoke and may not give a warning. If you do not have a smoke alarm in the bedroom and sleep with the door closed, a fire inside the bedroom may not sound an alarm located in another room. Therefore, it is recommended that a smoke alarm be installed inside and outside all bedrooms. A smoke alarm will not promptly sense a fire except in the area in which the smoke alarm is installed.

A smoke alarm may not always warn you about fires.

**All types of smoke alarm have limitations:** No type of smoke alarm can sense every kind of fire or smoke every time.

### Choosing your Smoke Alarm

**Fire types** – Photoelectric alarms like the Clipsal 755PFM4, 755PSMA4, 755LPSMA4 or 755RLPSMA4 respond faster to large smoke particles. Smoldering fires produce more large particles, so this type of fire will be more quickly detected by a photoelectric alarm. The type of fire likely to occur in the location is therefore an important consideration when choosing which type of smoke alarm to install.

Using a smoke alarm in a smokey area like a kitchen or in a high humidity area such as a bathroom can cause false alarms.

**DO NOT REMOVE A SMOKE ALARM BATTERY TO QUIETEN THE ALARM, OR TAKE THE ALARM DOWN.**

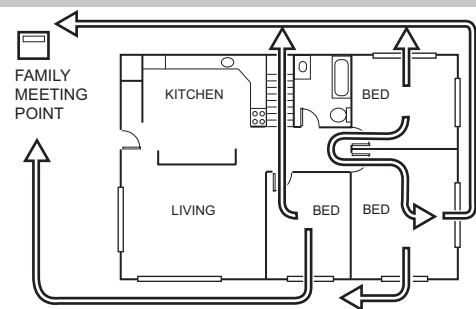
### Develop and Practice a Plan of Escape

#### Basics of Escape Plan

- Make a floor plan indicating all doors and windows and at least two escape routes from each room.
- Have a family meeting and discuss your escape plan, showing everyone what to do in case of fire.
- Determine a place outside your home where all of you can meet if a fire occurs, e.g. letterbox.
- Familiarise everyone with the sound of the smoke alarm and train them to leave your home when they hear that sound.
- Practice a fire drill at least every six months. This allows you to test your plan before an emergency.

**Note:** The diagram on the right is an example escape plan only.

**YOU MAY NOT BE ABLE TO REACH YOUR CHILDREN. IT IS IMPORTANT THEY KNOW WHAT TO DO!**



\* Example escape plan only

### What to do if Alarm Sounds

- In leaving, don't open any inside door without first feeling its surface. If hot, or if you see smoke seeping through cracks, don't open that door! Instead, use an alternative exit. If the inside door is cool, place your shoulder against it, open it slightly and be ready to slam it shut if heat and smoke rushes in.
- Stay close to the floor if the air is smokey. Breathe shallowly through a cloth, wet if possible.
- Once outside, go to your selected meeting place and make sure everyone is there.
- Call the fire brigade.
- Don't return to your home until fire officials say that it is all right to do so.

**Please remain vigilant against fire risks at all times. Fire prevention is your best safeguard.**

Most importantly...

**DON'T PANIC!**

### Customer care

If you have technical questions, please contact the Customer Care Centre in your country.

# CLIPSAL®

by Schneider Electric

**Australia**  
Schneider Electric (Australia) Pty Ltd

Customer Care Australia: 13SEAU (137328)  
e: [customercare.au@schneider-electric.com](mailto:customercare.au@schneider-electric.com)  
[www.schneider-electric.com.au](http://www.schneider-electric.com.au)

**New Zealand**  
Schneider Electric (NZ) Ltd  
After hours NZ hotline: 0800 735 4357  
Customer Care: 0800 652 999  
e: [sales@nz.schneider-electric.com](mailto:sales@nz.schneider-electric.com)  
[www.schneider-electric.com](http://www.schneider-electric.com)

Schneider Electric reserves the right to change specifications, modify designs and discontinue items without incurring obligation and whilst every effort is made to ensure that descriptions, specifications and other information in this catalogue are correct, no warranty is given in respect thereof and the company shall not be liable for any error therein.

© Schneider Electric 2019

This material is copyright under Australian and international laws. Except as permitted under the relevant law, no part of this work may be reproduced by any process without prior written permission of and acknowledgment to Schneider Electric.